



Company : Beach Petroleum Ltd

Well : Fermat-1

Interval : 975.00 - 2821.93 meters

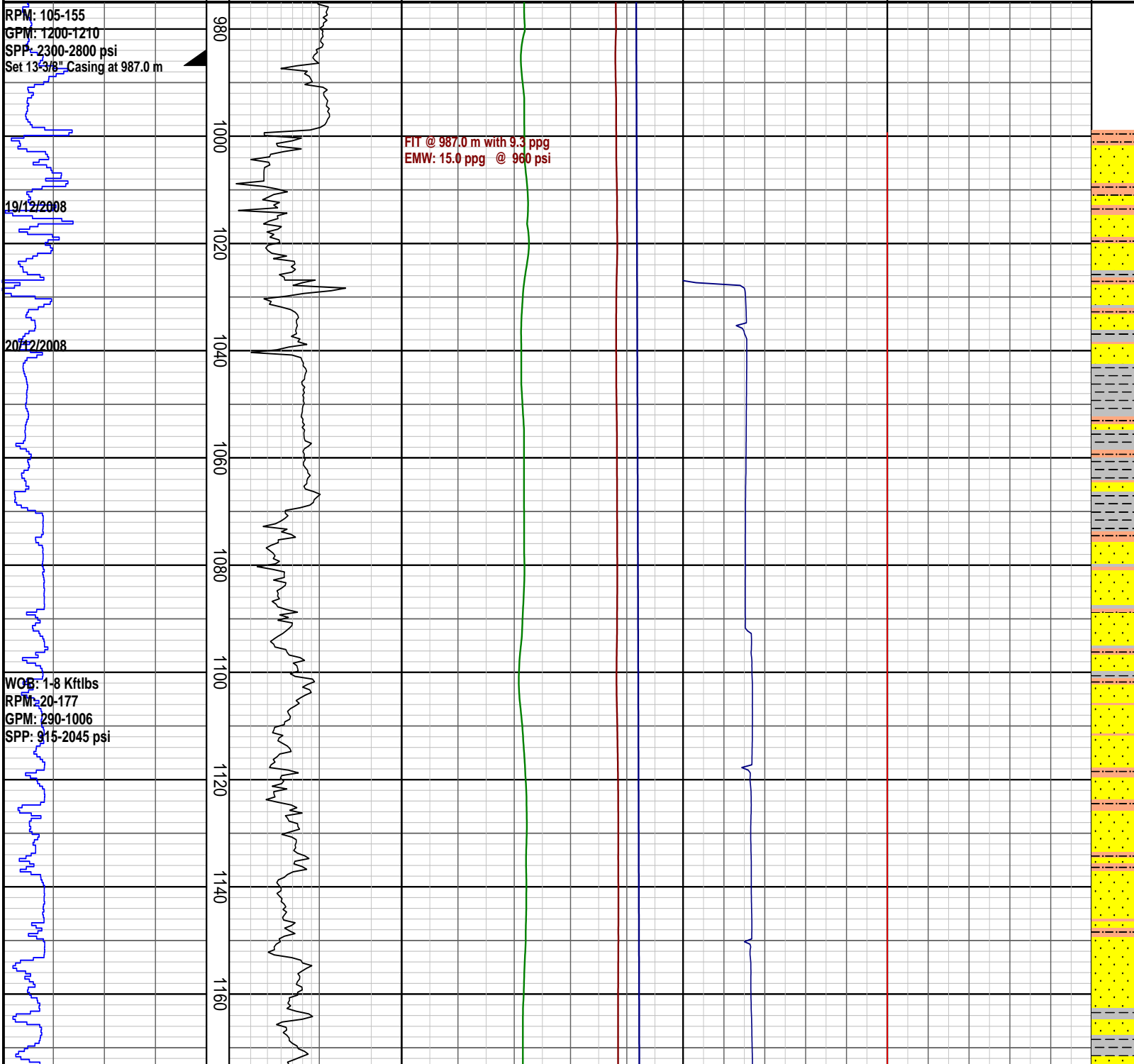
Created : 29/Dec/2008 5:13:44 AM

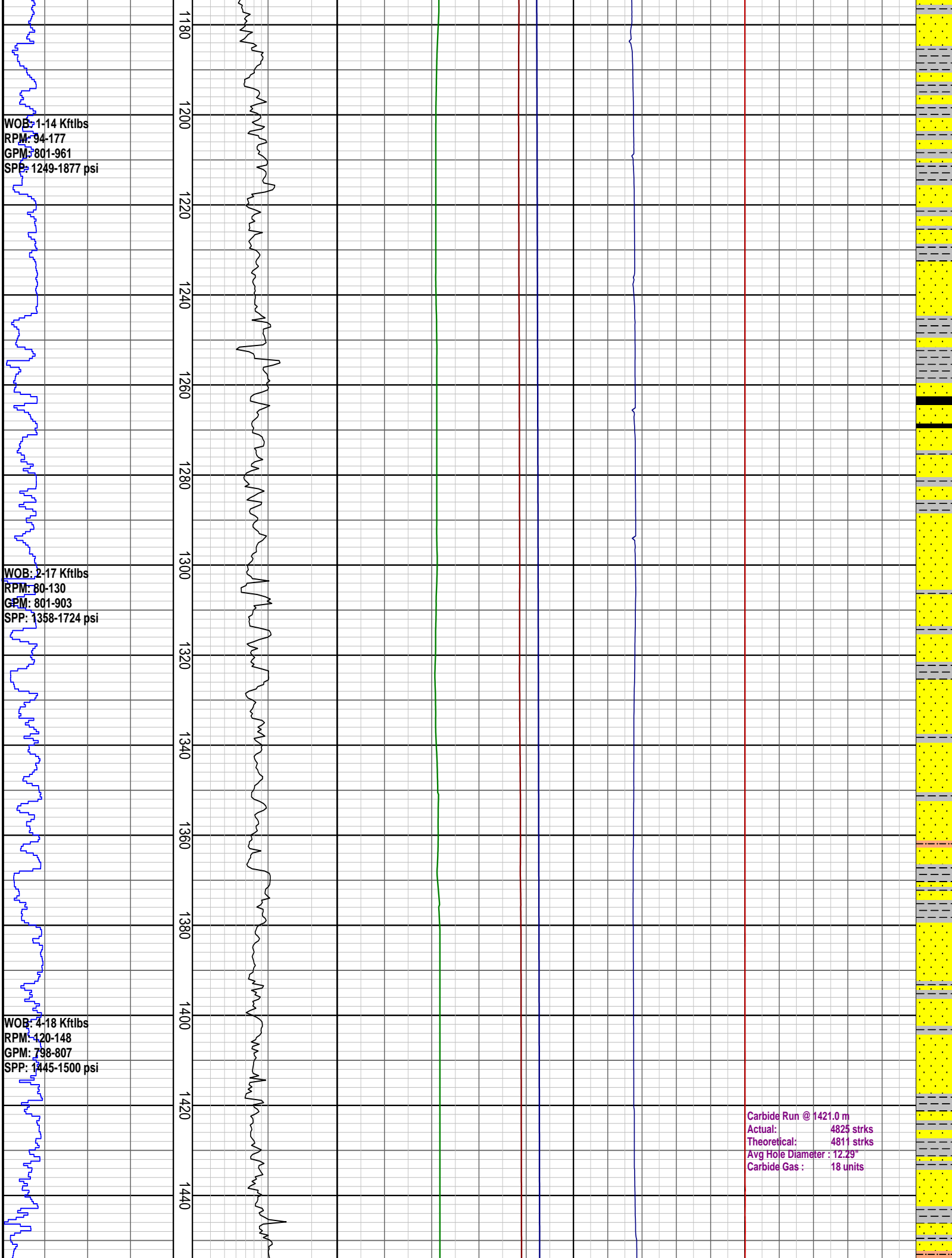


INTEQ

### PRESSURE DATA PLOT

Rate of Penetration ROP 50   100   150   200 m/hr	DRILLING EXPONENT DXC 0.3   3	PRESSURE DATA Pore Pressure 4   8   12   16   20 ppg Fracture Pressure 4   8   12   16   20 ppg Overburden Gradient 4   8   12   16   20 ppg	TEMPERATURE Temperature Out 20   40   60   80   100 degC	GAS Total Gas 50   100   150   200   250 unit	INTERPRETED LITHOLOGY
--	-------------------------------------	---	---	--	--------------------------



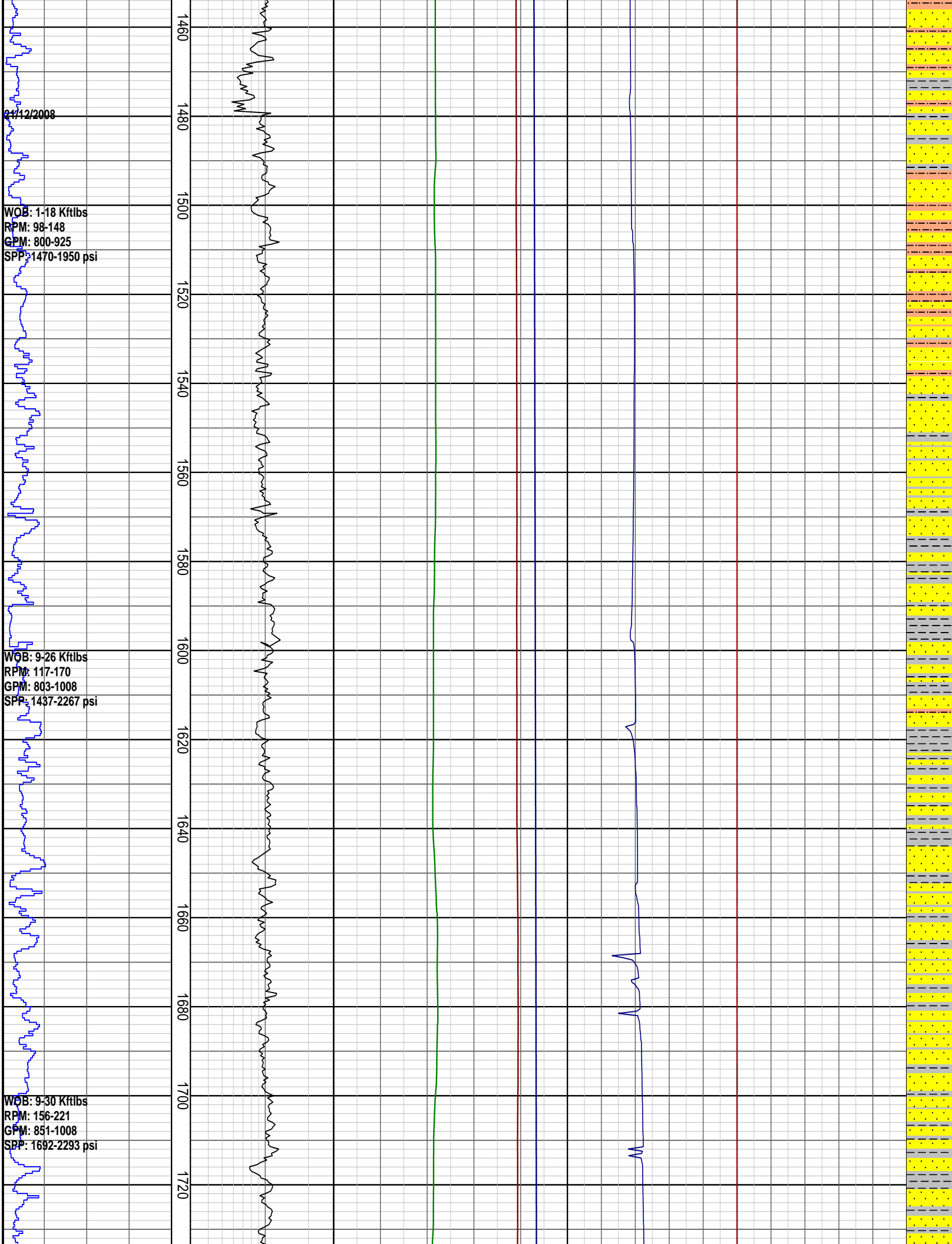


WOB: 1-14 Kftlbs  
RPM: 94-177  
GPM: 801-961  
SPP: 1249-1877 psi

WOB: 2-17 Kftlbs  
RPM: 80-130  
GPM: 801-903  
SPP: 1358-1724 psi

WOB: 4-18 Kftlbs  
RPM: 120-148  
GPM: 798-807  
SPP: 1445-1500 psi

Carbide Run @ 1421.0 m  
Actual: 4825 strks  
Theoretical: 4811 strks  
Avg Hole Diameter : 12.29"  
Carbide Gas : 18 units

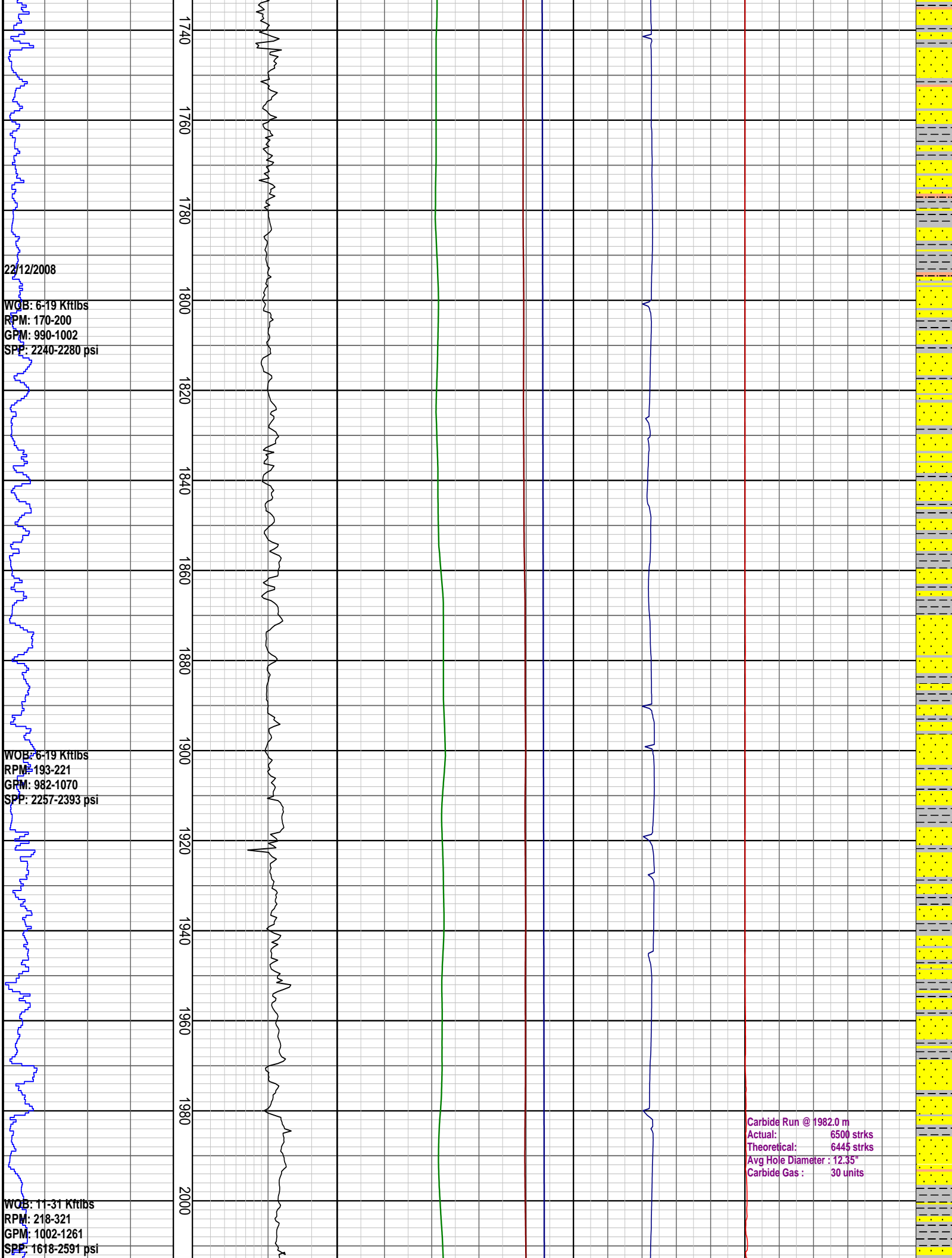


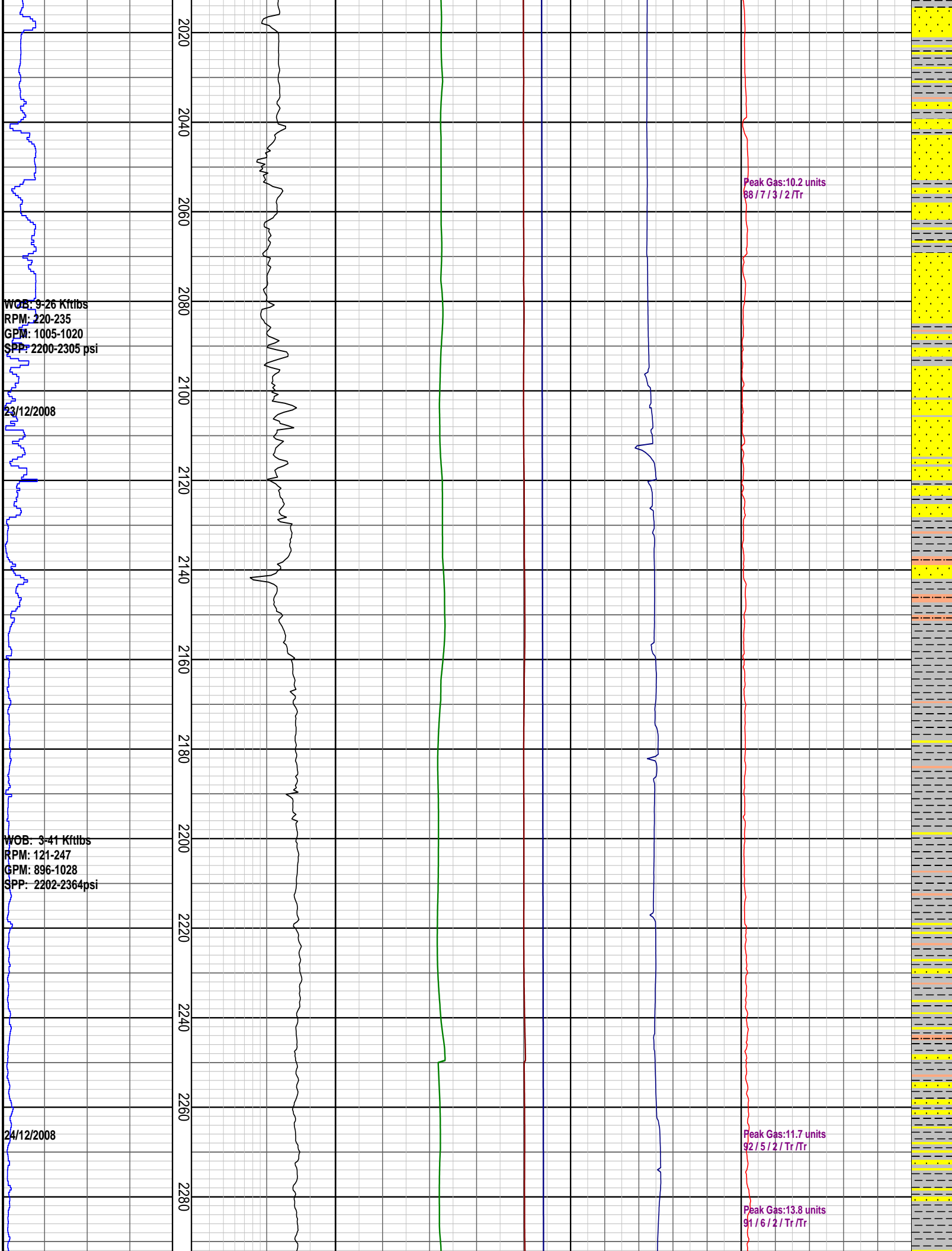
2/12/2008

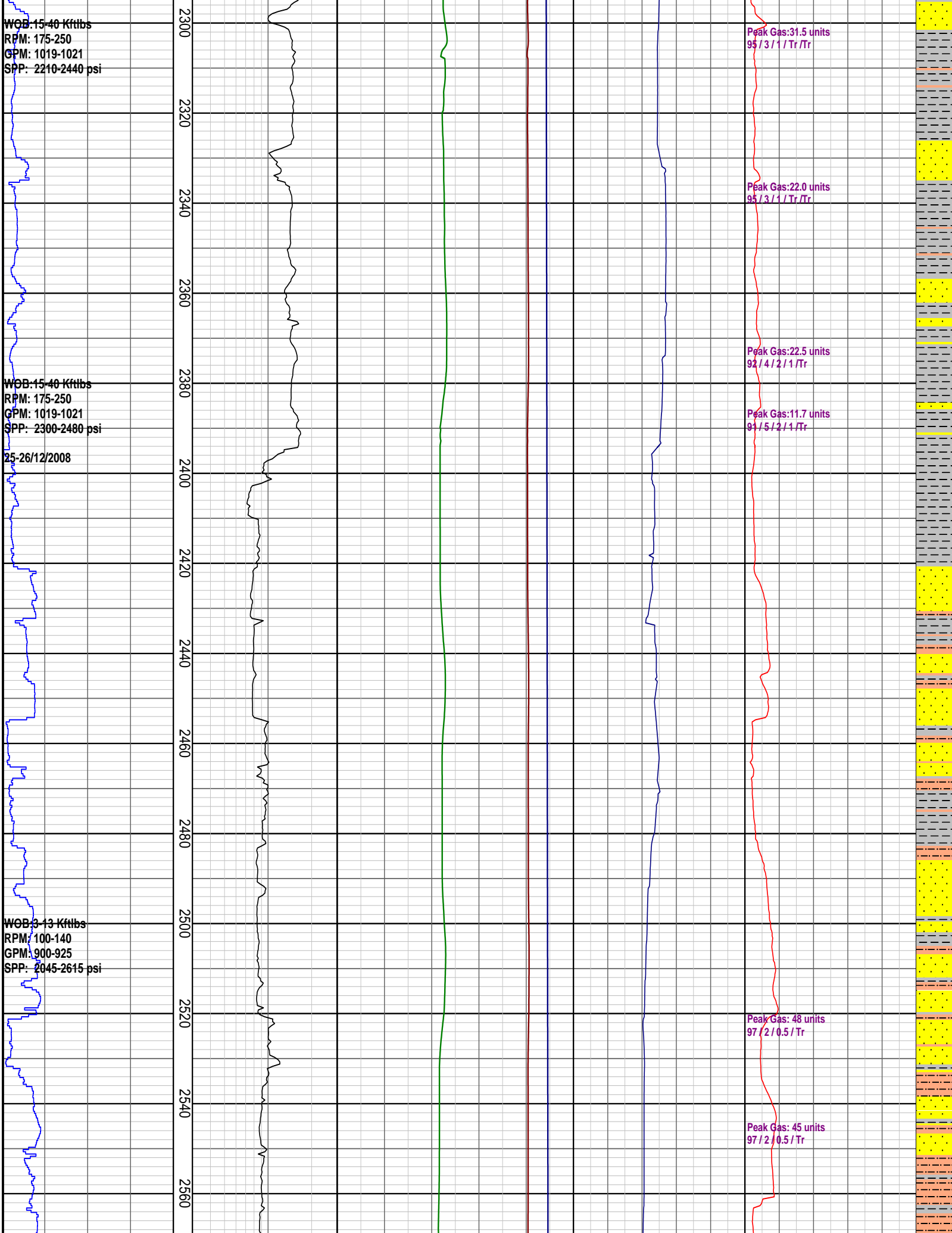
WOB: 1-18 Kftlbs  
RPM: 98-148  
GPM: 800-925  
SPP: 1470-1950 psi

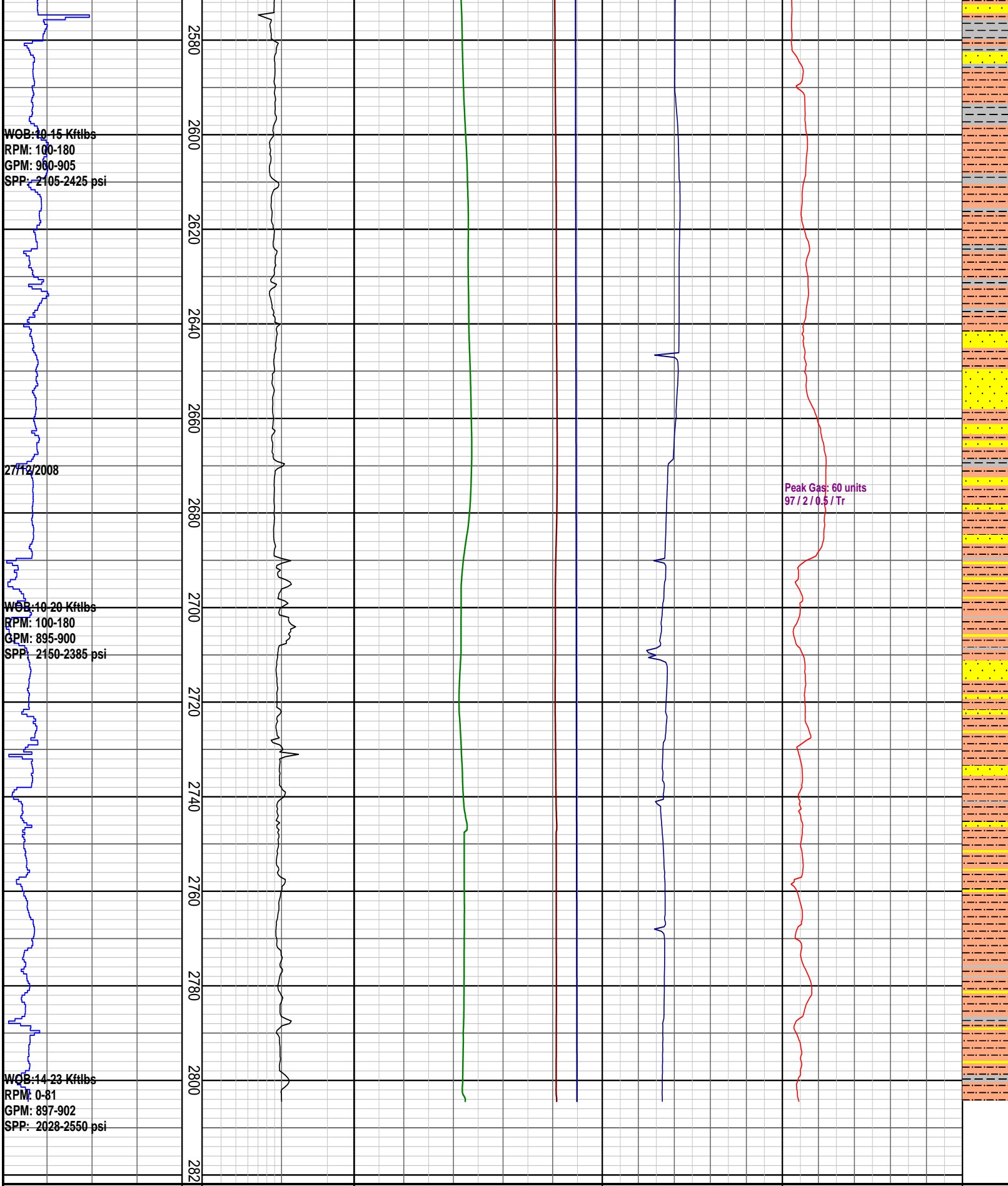
WOB: 9-26 Kftlbs  
RPM: 117-170  
GPM: 803-1008  
SPP: 1437-2267 psi

WOB: 9-30 Kftlbs  
RPM: 156-221  
GPM: 851-1008  
SPP: 1692-2293 psi









**PRESSURE DATA PLOT**

Rate of Penetration ROP	DRILLING EXPONENT DXC	PRESSURE DATA Pore Pressure	TEMPERATURE Temperature Out	GAS Total Gas	INTERPRETED LITHOLOGY
50   100   150   200 m/hr	0.3   3	4   8   12   16   20 ppg	20   40   60   80   100 degC	50   100   150   200   250 unit	

000

Fracture Pressure

4 | 8 | 12 | 16 | 20

ppg

Overburden Gradient

4 | 8 | 12 | 16 | 20

ppg